



Register your product and get support at
www.philips.com/welcome

Philips LED Penlight Premium

English	LED Inspection lamp
Dansk	LED inspektionslampe
Deutsch	LED-Inspektionslampe
Dutch	LED-inspectielamp
Français	Lampe baladeuse à LED
Italiano	Lampada di ispezione a LED
Norsk	LED-inspeksjonslampe
Polski	Lampa inspekcyjna LED
Português	Lâmpada de inspeção LED
Español	Lámpara de inspección LED
Suomi	LED-tarkastuslamppu
Svenska	Inspektionslampe med LED
Русский	Светодиодный инспекционный фонарь
中文	LED便携式工具灯
한국어	LED작업등



PHILIPS

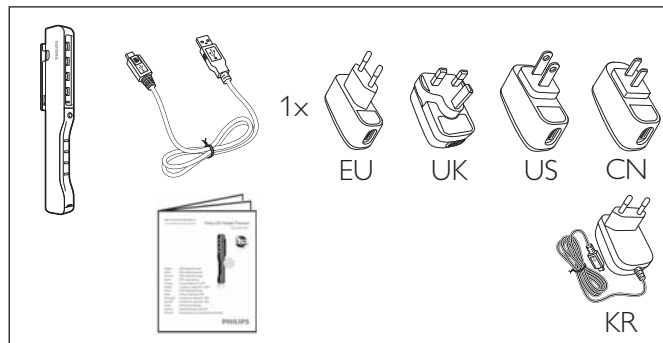


www.philips.com/support

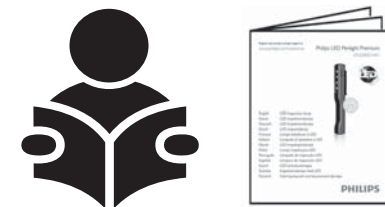
www.philips.com/automotive

Europe	+800 74 45 47 75
North America	+1 800 257 6054
Argentina	+54 11 4546 7777
Brazil	+80 0 979 1925
Central America, Ecuador, Venezuela	+57 1 307 8040
Chile	+56 2 730 2000
Colombia	+57 1 307 8040 01 800 011 4586
Perú	+51 1 610 6200
China	+86 21 59155104
Korea	+82 80 600 6600 +82 2 709 1200

1



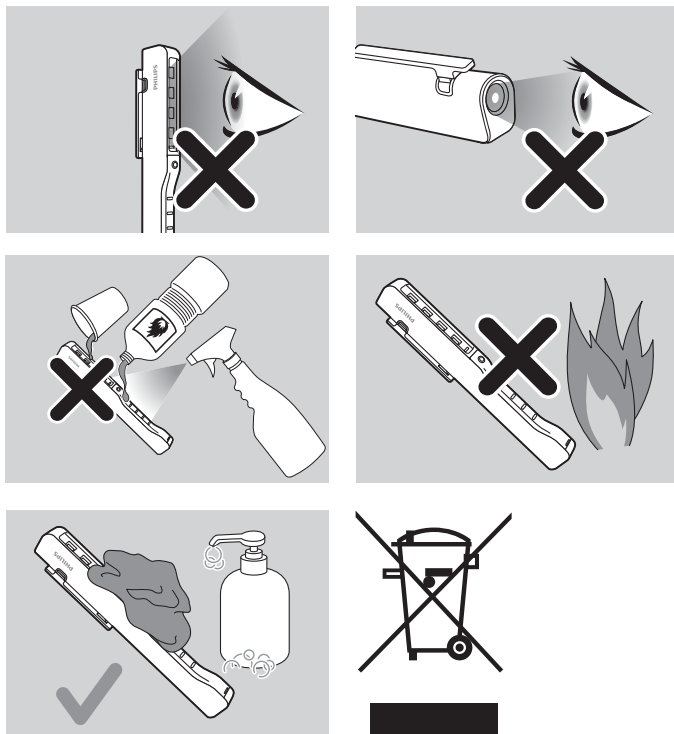
2



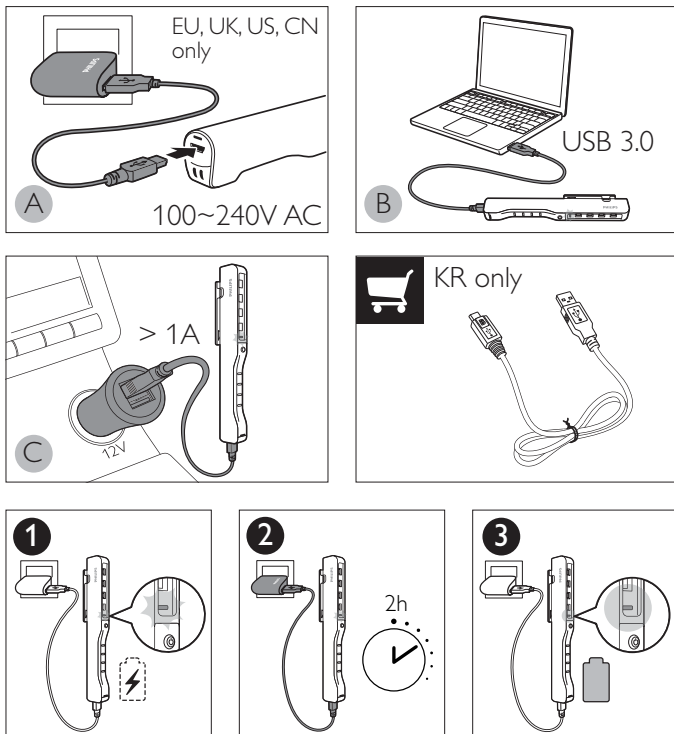
Specifications are subject to change without notice.
©2012 Koninklijke Philips Electronics N.V.
All rights reserved.

Printed in China 12-2012

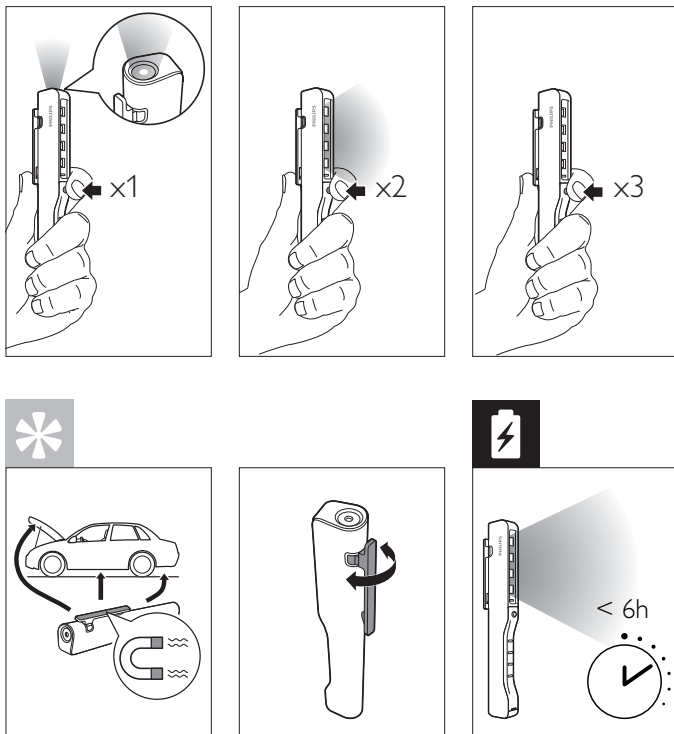
3  





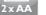












4   



5 



6 

Description	
	Operating line voltage 100~240V / Output 12V 1A
	Charging time 2 hours
	Battery type 2x AA LFP
	Battery performance < 6 hours*
	Light intensity (at 0.5 m) Focus beam 3 600 lux Wide beam 250 lux
	Light output (flux) Focus beam 90 lm Wide beam 120 lm
	Impact protection rating IK07
	Ingress protection rating IP54
	Operating temperature -10°C to 50°C / -14°F to 122°F (US)
	Adaptor operating temperature 0°C to 40°C / 32°F to 104°F (US)
	Storage temperature -20°C to 60°C / -4°F to 140°F (US)
	Lamp dimensions 183 x 21 mm / 7.2 x 0.8 inches (US)
	Product weight 90 g / 0.19 lb. (US)
	Magnet rotating
	Connection USB 3.0

*Average hours of burning life as measured at -10 degree Celsius and until residual luminous flux amounts to 1 lumen.